

YOUR PASSPORT TO WALKING AT

Bradford Area High School

November 2006
through
May, 2007

Rules

No Running

No Stairs

Follow The Trails Marked In Blue At The School

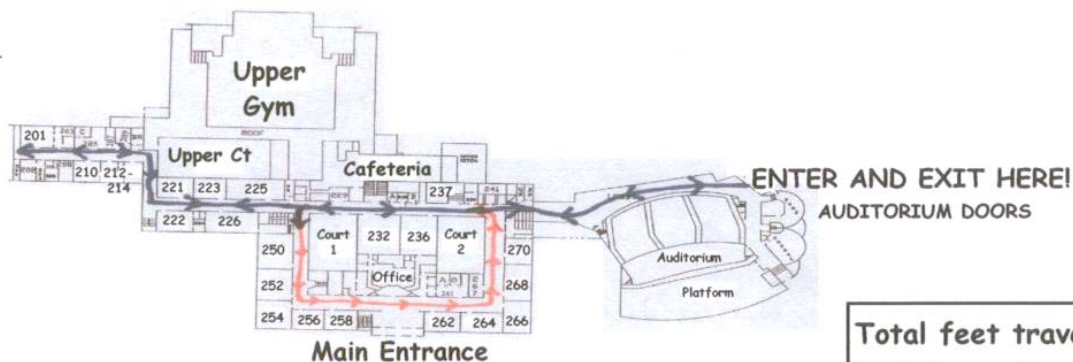
(Do not deviate from the marked trails and roam the building, we have employees who will be trying to work during the time you are using the facility.)

Stay within the 5:00 pm - 6:00 pm timeframe

(There are other events using the facility)

Enter and exit **ONLY** using the auditorium doors

BE CAREFUL AND ENJOY YOUR WALK!



Total feet traveled =
1,920 per circuit
(5,280 feet = 1 mile)